

Always accompany,mountains and rivers

时川® | S^{UE}RUNG



MOBILEPOWER PRODUCTS ANDTECHNICAL SOLUTIONS

S^{UE}RUNG

Guangdong Tuqiang electronic Technology Co.,LTD

Tel:133 7779 7928



Always accompany,mountains and rivers



“Always accompany mountains and rivers”



Company profile

Guangdong Tuestrong Electronic Technology is a subsidiary of Fujian Shengshuo Group, The Group Company has been a First-tier supplier of CATL (Contemporary Amperex Technology Co. Limited) for over a decade.

In the current stage of rapid development of fast-moving consumer goods, relying on the rich experience of intelligent manufacturing of the group company, In order to better serve retail consumers, the group company has specifically established Tuestrong Electronic Technology to focus on the mobile power supply sector and actively provide pre-sales, sales, and after-sales supporting services for consumers.

Tuestrong Electronic Technology is an energy storage battery manufacturer that integrates industrial design, structure, software and hardware, and battery cell development. With rich and mature research and development capabilities, strict quality control systems, sound operating mechanisms, and comprehensive service capabilities, we are dedicated to providing users with convenient mobile power products and technical solutions, achieving a pleasant electricity experience.

The ShiChuan trademark Tuestrong is permanently exclusive to Tuestrong Electronic Technology. Just like the original intention of designing the trademark, we are committed to implementing this sentence into the blood of the entire company and always accompanying users.



s^{UE}RUNG



Always accompany mountains and rivers





x-cell500Pro



x-cell500pro

Rated Power	600w
Battery Capacity	543WH
Weight	6.8KG
Charging Time	1h
Size/length* width *height	231*153*191mm



百川s/x-cell300



百川s/x-cell300

Rated Power	600w
Battery Capacity	318WH
Weight	3.1KG
Charging Time	3h
Size/length* width *height	18.9*15*18.7cm





百川plus/x-cell500



百川plus/x-cell500

Rated Power	600w
Battery Capacity	520WH
Weight	3. 9KG
Charging Time	4h
Size/length* width *height	18.9*15*18.7cm





x-cell1000



x-cell1000

Rated Power	1800w
Battery Capacity	1024WH
Weight	13.5KG
Charging Time	1h
Size/length* width *height	447*234*219mm





x-cell2000



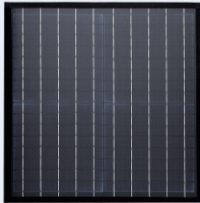
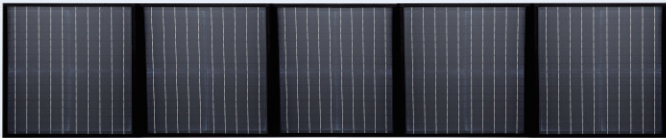
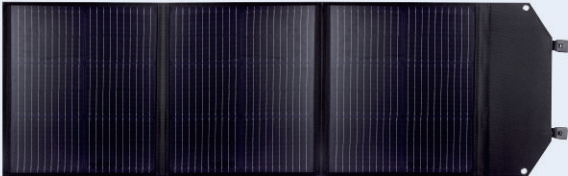
x-cell2000

Rated Power	2600w
Battery Capacity	2048WH
Weight	24KG
Charging Time	2h
Size/length* width *height	483*295*301mm





100W Three amplitude solar charging panels



Threeamplitude
solarchargingpanels

Power	100w
Power supply voltageand current	19.8V/5A
Conversion efficiency	22%~25%
Weight	3.3KG
Size/length* width *height	45*41*2cm

Portable solar panel

Power	300w
Power supply voltageand current	19.8V/5A
Conversion efficiency	22%~25%
Weight	6KG
Size/length* width *height	45*41*5cm



S-3

Rated Power	3000w
Battery Capacity	3000WH
Weight	33KG
Charging Time	2h
Size/length* width *height	45*28*36cm



S-0.5

Rated Power	600w
Battery Capacity	518WH
Weight	6.4KG
Charging Time	5h
Size/length* width *height	27*21*18.6cm



S1-0.5

Rated Power	600w
Battery Capacity	518WH
Weight	6.4KG
Charging Time	5h
Size/length* width *height	27*21*23cm



S-1

Rated Power	1800w
Battery Capacity	1024WH
Weight	11.9KG
Charging Time	1.2h
Size/length* width *height	37*25*27cm



Portable power bank

Inpute	5V/2.1A/12W
Output	5V/2.1A/12W
Weight	1.1KG
Size/length* width *height	9*7*18cm



magnetit charger

Inpute	5V/2.1A/12W
Output	5V/1A/12W
Weight	0.1KG
Size/length* width *height	9.5*6.5*1.5cm



S1-1

Rated Power	1200w
Battery Capacity	1024WH
Weight	11. 8KG
Charging Time	1.5h
Size/length* width *height	35*18.7*22.4cm



S2-1

Rated Power	1500w
Battery Capacity	1152WH
Weight	11.2KG
Charging Time	3h
Size/length* width *height	28*24*26cm



S-2

Rated Power	2400w
Battery Capacity	2048WH
Weight	21.9KG
Charging Time	2h
Size/length* width *height	40*28*30cm



Eg008pb

Rated Power	150w
Battery Capacity	12V/12AH
Weight	1.1KG
Charging Time	1h
Size/length* width *height	23.8*13.5*18.5cm

Global Pocket WiFi (T8)

- Global fast 4G LTE
- Supports 200+ countries and regions, No additional roaming charge, no SIM
- Supports 300+ operators’ network
- 3500mAh large capacity battery, 15+ working hours
- Up to 8 devices WiFi connection
- Compact and portable Pocket WiFi



Specifications

Product colour	Grey
Product size	60mm×110mm×13mm
Product weight	100g
Battery capacity	3500mAh
Charging(h)	About 3 hours
Working hours(h)	About 15 hours
Peak rate	DL 150Mbps/UL 50Mbps
WiFi connection	1~8 devices connection
Network band	Supports global bands
Supports network type	4G FDD LTE：B1/B2/B3/B4/B5/B7/B8/B9/B12/B13/B17/B18/B19/B20/B25/B26/B28/B66 4G TDD LTE：B34/B38/B39/B40/B41 3G：B1/B2/B4/B5/B8 2G：B2/B3/B5/B8 2G/3G/4G global access

vSIM USB Dongle (TD10)

- Global fast 4G LTE
- Supports 200+ countries and regions, No additional roaming charge, no SIM
- Global bands covered, matching 300 operators across the world
- Always online when power available, free drive, power makes internet available
- 8 devices connected at the same time
- Compact and portable Pocket WiFi



Specifications	
Product colour	Grey
Product size	102mm×40mm×10mm
Product weight	~35g
WiFi	802.11b/g/n 2.4G
WiFi max users	8
Peak rate	CAT4, DL 150Mbps, UL 50Mbps
Supports network types	4G FDD LTE:B1/B2/B3/B4/B5/B7/B8/B9/B12/B13/B17/B18/B19/B20/B25/B26/B28AB/B66 4G TDD LTE:B34/B38/B39/B40/B41 3G:B1/B2/B4/B5/B8 2G:B2/B3/B5/B8